

## 9. DataTrac Preferences

The option “DataTrac Preferences” under the Setup menu (or the keyboard shortcut Ctrl+K) allows to adjust program settings, the way data is displayed on the screen, and select the units DataTrac 3 uses to display data. These four sections (Figure 13) are described below.

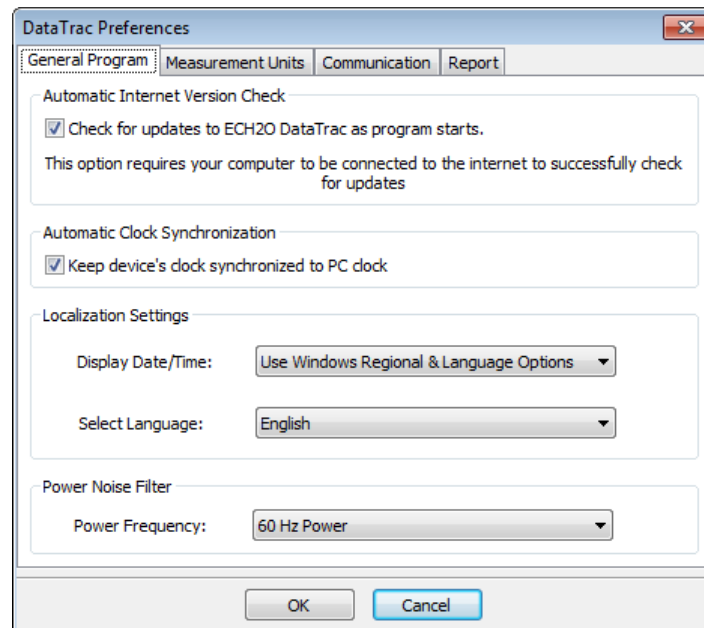


Figure 13. DataTrac Preferences.

### a. General Program

The General Program Options tab allows modifying basic program settings. The screen options are described as follows (Decagon Devices, Inc., 2013):

**Automatic Internet Version Check:** enabling this option will have the program check automatically for updates when the program starts, whenever you are connected to the Internet. When an update is found, you will be directed to the website where you can download it.

**Automatic Clock Synchronization:** By default, DataTrac 3 automatically synchronizes the logger's date and time to the time set on the computer. Click to un-check the check box, which will disable this feature. You can update the date and time manually anytime you are connected by selecting Connection> Device Tools > Set Time.

**Localization Settings:** You have control how your logger's date and time are displayed on the toolbar. By default, the date and time are formatted using the settings in the Windows Regional & Language Options control panel. You can modify this to display the date and time in day/month/year format, with either 12- or 24-hour format. (In non-english localizations the 12-hour option will display in 24-hour

format). You also have control over the language that DataTrac 3. By default, English is the language selected at installation time. This may be changed at any point going forward. After changing the language, DataTrac 3 must be restarted before it will switch languages.

**Power Noise Filter:** The AC or "mains" electrical power we use every day can add a subtle amount of noise to the logger sensor measurements. The logger's Power Noise Filter (PNF) is a setting designed to eliminate this electrical noise that comes from the AC power distribution system. You should set the value of the PNF to match the frequency of the power cycle where you live. (North America and most of Asia use 60 Hz, while in most of Europe it is 50 Hz.) This value only needs to be set once. DataTrac will automatically set the PNF of each new logger it connects to.

### b. Measurement Units

The measurement units tab allows selecting the units the data is displayed with in chart or table view for a number of parameters (Figure 14). The units available for each parameter can be seen by clicking on the down ward arrow.

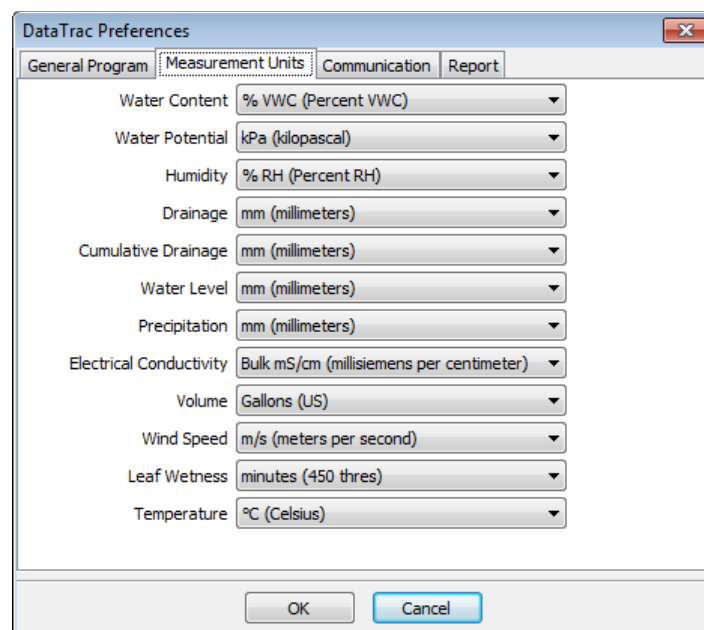


Figure 14. Measurement Units.

### c. Communication

The Communication tab of the Preferences menu allows controlling how DataTrac 3 connects to and communicates with the Decagon devices. The screen options are described below.

**Device Commands Retries:** If you are experiencing unreliable communication with a logger, set the number of Direct Connect Retries - the number of times the computer will automatically attempt to reconnect to a logger - from 3 to 10 times. For a direct connection, no more than 3 tries should be necessary. For a radio connection, however, you can have Radio Connect Retries from 5 to 12 times.

**Maximum Baud Rate for Direct Connection:** Set a baud rate lower than the default 115,200 baud if you consistently experience a noisy serial connection.

**Decagon Data Services:** DataTrac 3 offer the ability to automatically download new data from specific devices. Decagon Data Services will download directly from configured DataStations and Em50G Subscriptions. The rate at which this feature runs is set from the Communication tab in the DataTrac Preferences window. It may be disabled or at intervals of increasing length from 1 hour with an upper limit of 24 hours.

#### **d. Report**

The Report tab of the Preferences menu allows adding a custom logo to PDF reports generated by datatrac.

**Logo Path:** This is the location of the report logo image, with the "Browse" button you may browse through your computer files and select an image to use. In order to use the report logo you must check the "Display logo in report" box. The logo should be 100 pixels by 100 pixels, and should be a PNG, GIF, or JPG formatted image.